



Inline Automated Optical Inspection System

AOI

Pre-Reflow / Post-Reflow

爐前 / 爐後



www.folungwin.com

中國電子專用設備工業協會理事單位

Folungwin Industrial Park—Under Construction
科隆威工業園 - 擬建中



FLW-V3 Series Inline Automated Optical Inspection System

Product Features

- ◆ High resolution color 3 CCD cameras, ultra clear imaging system
- ◆ High inspection accuracy with 01005-component inspection capacity
- ◆ Easy-to-use inline and offline programming system, program set-up and calibration is easy and fast.
- ◆ Ultra low false rejection rate can meet high quality production requirement
- ◆ The system can be used for inspection after printing, after mounting and after reflow/wave soldering
- ◆ Capable of inspection of double sided PCBs in same line, automated program changeover
- ◆ The system can handle both leaded and lead-free processes
- ◆ High price/performance ratio and optimized system upgrade solution
- ◆ Lifetime free-of-charge software upgrade



產品特點

- ◆ 超高清晰度 3CCD 彩色相機
- ◆ 穩定的重複檢測性能、高分辨率，對應 01005 元件檢查
- ◆ 直觀易用的在線和離線編程系統，制程編制和調試簡單快捷
- ◆ 超低誤判率，適合高品質生產要求
- ◆ 同一機臺適用於錫膏印刷後、貼片後、回流焊後的高速、高精度檢測
- ◆ 支持 PCB 雙面同綫測試，自動切換程序；
- ◆ 有鉛制程/無鉛制程
- ◆ 優異的性價比和最佳的系統升級方案
- ◆ 軟件終生免費升級

◆ 特別聲明：

本在綫自動光學檢測機含 20 項注冊專利技術，如有模仿抄襲，本公司必定追究其法律責任。

◆ Special Clarifications:

Folungwin AOI are protected by 20 patents. We reserve the right to take legal actions against any people or parties who challenge(s) our patents for whatever reason(s).



產品特點

- ◆ 超高清晰度 3CCD 彩色相機
- ◆ 穩定的重複檢測性能、高分辨率，對應 01005 元件檢查
- ◆ 直觀易用的在線和離線編程系統，制程編制和調試簡單快捷
- ◆ 超低誤判率，適合高品質生產要求
- ◆ 同一機臺適用於錫膏印刷後、貼片後、回流焊後的高速、高精度檢測
- ◆ 支持 PCB 雙面同綫測試，自動切換程序；
- ◆ 有鉛制程/無鉛制程
- ◆ 優異的性價比和最佳的系統升級方案
- ◆ 軟件終生免費升級

◆ 特別聲明：

本在綫自動光學檢測機含 20 項注冊專利技術，如有模仿抄襲，本公司必定追究其法律責任。

◆ Special Clarifications:

Folungwin AOI are protected by 20 patents. We reserve the right to take legal actions against any people or parties who challenge(s) our patents for whatever reason(s).



Covered Detectable Defects

可檢查的缺陷

OK 良好



NG 不良



Missing component
缺件



Misoriented component
偏移



Lifted lead
翹腳



Wrong part
錯件



Sidestand
側立

OK 良好



Open soldering
空焊



Cold soldering
假焊



Insufficient solder
少錫



Excessive solder
多錫



Tombstone
立碑

NG 不良



Open soldering
空焊



Cold soldering
假焊



Insufficient solder
少錫



Excessive solder
多錫



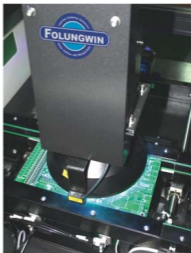
Tombstone
立碑

Ultra Clear Imaging System

Compared to the single camera design, 3 high resolution and high pixel multi color CCD cameras can acquire 3 times information and more field of view which results in faster inspect speed and higher inspection accuracy. New design with programmable red, green, blue LED lighting system can get clear images with appropriate contrast. Multi-color images reflect shape information of the solder joint. Defects are accurately inspected.

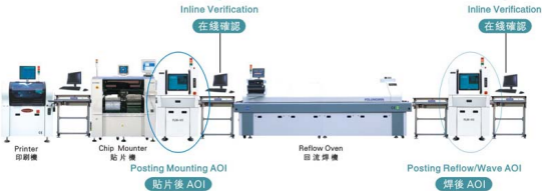
超高清晰度的圖像系統

高像素3CCD彩色攝像頭和高性能鏡頭，可以獲得單CCD攝像頭3倍的信息量及更大的檢查視野，從而獲得更快檢查速度和更高檢查精度；新型設計可編程紅、綠、藍、LED照明系統，可獲得最適宜的圖像對比度和圖像清晰度；彩色圖像清楚反映焊點形狀信息，準確檢出缺陷。



AOI generated defect images and inspection results are verified in real time.

實時確認 AOI 不良判定圖像并按對其判定結果進行確認



Remote Management System

遠程管理系統

Options 選項配置

All inspection data is stored and analyzed and communicated back to and provides guidance to the production line (SPC function).

實時存儲、分析所有檢查數據 (SPC) 及時反饋到生產線中，指導生產。

Inline/Offline Programming Station

在線 / 離線編程器

Options 選項配置

Programming can be done "on-the-fly" without the need of stopping production and this dramatically increases the uptime.

在不停止生產線的狀態下可以進行檢查程序的編制，極大地提高設備工作效率。

Remote Batch Rework Station

遠程批量維修站

Options 選項配置

The defect data is stored and defected boards are verified based on the information sent by the barcoder.

存儲不良數據，通過 Barcode 機的信息對各生產線的不良板進行遠程確認

(Machine Options)

Inline/Offline Programming Station
Onsite/Remote Process Management System (SPC)
Words Identification System (OCR/OCV)
Barcoder / 2-dimensional Barcoder

機器選項配置

在線 / 離線編程站；
現場 / 遠程生產過程管理系統 (SPC)；
文字識別系統 (OCR/OCV)；
條形碼、二維碼

Component Data Base

For each of different types of components (such as transistor, QFP, chip component, etc), the system generates individual inspection mode (consisting of a series of inspection windows) which enables the user to set relative parameters easily to accommodate the component. The user can also select the proper component template from the component data base and put it at the appropriate place.



Component Data Base
元件資料庫

方便的元件庫功能

針對每種使用的元件（晶體管、QFP、片式元件等），系統提供一個相應類型的檢查模式（由一系列檢查窗口組成），用戶可以方便地設定參數以適應被檢元件，亦可快速地從元件資料庫中提取相應元件模板放置於相應位置。



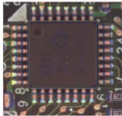
Component Template
元件模板

Each type of component needs to be set only once. Then the system can complete the process automatically and the user only needs to do minor adjustment when needed. This saves learning time significantly and minimizes human operations thus optimizes the demanding production lines.

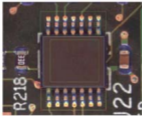
Setting the inspection parameters in advance for frequently used IC, Chip and other components can reduce programming time and eliminate the operator programming variables.

每一類元件只需設定一次，同類其餘的器件，系統則可以自動完成，只需要人工再適當調整一下即可，這就大大節省了學習時間，減輕了用戶工作量，從而滿足快速變化的生產線。

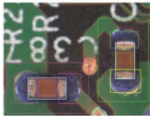
事先設定 IC、Chip 等經常使用的元件項目檢測參數，縮短編程時間，大大減少因編程人員的作業熟練程度帶來的差異。



IC Component Inspection
IC元件檢測



IC Component Inspection
IC元件檢測



CHIP Component Inspection
CHIP元件檢測

Automated Programming

By using CAD or chip mounter data, automated programming is realized quickly and accurately which reduces the operator work load.

自動程序生成

根據CAD或貼片機數據進行自動編程，大大縮短編程時間，減輕手工作業負擔。

Colorful Image Comparison Algorithms

Colorful image based feature analysis technology extracts appearance characteristics of the component or solder joint combining with the high definition CCD color cameras and rogrammable RGB LED lighting system and ensuring powerful and steady inspection. The unique color image comparison algorithm integrates the advantages of the powerful feature analysis algorithms and the easy-to-use image comparison algorithms. In addition, the universal logic combination algorithms is designed and used.

彩色圖像識別算法

自主研發的基於彩色圖像的特徵分析技術，提取元件/焊點的外觀特徵，配合高解析度CCD彩色攝像機和可編程的RGB彩色LED照明系統，具有強大而穩定的檢測能力。整合特徵分析算法檢測能力強和圖像比對算法的簡單易用的優點，全新設計了專有的彩色圖像比對算法；新引入的通用邏輯組合算法，極大地擴展了軟件算法的通用性。

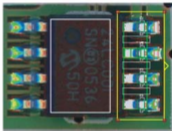
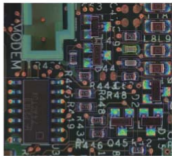
Automated Window Alignment

This feature can compensate for PCB warpage, shrinkage and expansion. As illustrated by the picture on the left below, when the PCB is warped, the pad will offside the inspection window. The system can find out the correct position of the pad automatically (see picture on the right below). Defects inspection is guaranteed.



自動窗口位置校正

可自動補償印刷綫路板翹曲、收縮及膨脹的影響，實現可靠檢查。如左圖所示，PCB翹曲時，將導致焊盤偏離檢查窗口，檢查算法可自動搜索到焊盤位置（如右圖所示），保證可靠檢出缺陷。



Angled component inspection

0-359 degree mounted components can be inspected with 1 degree pitch. Inspection speed is not affected by angle rotation.

斜貼元件檢查

以1°為步長，0-359斜貼都可以準確檢測，檢查速度不受角度旋轉影響。



SPC Real Time Analysis System

The SPC system provides extensive statistical information such as inspection time, inspection quantity, NG records, PCB barcode etc. It also can monitor the quality variations and defect distributions of the production line which optimizes quality control and process improvement.

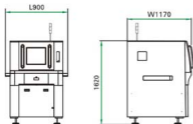
強大的SPC實時分析系統

SPC分析系統具有豐富的統計信息，如：檢測時間、檢測數量、NG統計、PCB條形碼等，並能快速、直觀反映生產線上的品質變化和缺陷分布，不但能方便進行品質管理，同時也為工藝改進提供依據。

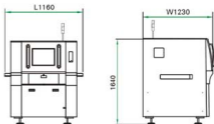


Machine Drawings

機器外形圖



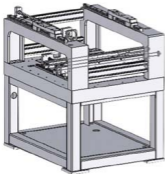
FLW-V3(M)



FLW-V3(L)

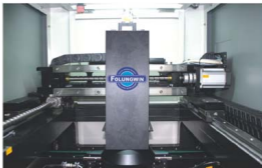
High Rigid Frame and High Precision Positioning System

High rigid frame minimizes the system vibration and noise. AC servo positioning system with accuracy of 0.005mm ensures higher repeatability.



高剛性機臺和高精度定位系統

高剛性機臺，有效减小機器晃動和噪音；高精度交流伺服定位系統，精度達到0.005mm，保證更高的重複精度。



Powerful and Easy-to-use Programming System

- ◆ Windows XP based operating system with interactive GUI programming interface is intuitive and easy to use which helps the user to finish programming more quickly;
- ◆ Component registration: universal component registered is saved in data base which minimizes programming cycle;
- ◆ Auto programming feature can adopt the coordinate data generated by popular chip mounters and eliminate manual operation;
- ◆ Offline programming software can improve the production uptime;
- ◆ English and Chinese interface.



功能強大而簡單易用的編程系統

- ◆ 交互式圖形界面：WINDOWS XP 操作系統、圖形化點擊拖動編程方式，直觀易用，使用戶可以在最短时间内編寫完程序。
- ◆ 元件庫登記：通用元件登記進數據庫，縮短編程時間
- ◆ 自動編程：可以採用CAD或貼片機的坐標數據，實現自動編程，減少手工作業。
- ◆ 離線編程軟件：縮短換線時間，提高設備的使用效率。
- ◆ 中英文操作界面

(Specifications) 技術參數

Model	型號	FLW-V3(M)		FLW-V3(L)	
Inspectable Board 檢查對象基板	PCB Type 基板種類	Post Printing 印刷後	Post Mounting 貼裝後	Post Reflow/Wave 焊接後	
	PCB Size 基板尺寸	Min.50mm(L) x 50mm (W) Max.320mm(L) x 420mm (W)	Min.50mm(L) x 50mm (W) Max.400mm(L) x 420mm (W)		
PCB Thickness	基板厚度	0.3~3.0mm			
PCB Warpage	基板扭曲度	Max.2mm (diagonally) 最大2mm (對角測量)			
Maximum Component Height	上下淨高	Top Side: 25mm (Optional : 40mm) 基板上: 25mm (可選: 40mm)		Bottom Side: 50mm 基板下: 50mm	
PCB Fixing Method	基板固定方式	Side Clamping 外形固定			
Defects detected	檢查項目	Solder availability solder misalignment excessive solder, insufficient solder, solder bridging, Contamination 有無焊錫、焊錫偏移、 焊錫過多、焊錫過少 橋接、污染	Component misalignment, opposite polarity, Missing component, damaged component wrong component 元件偏移、極性、缺件、 元件破損、元件錯裝 (立碑、反白、側立)	Missing component wrong component solder misalignment insufficient solder, solder bridging, excessive solder, cold soldering, open soldering solder ball, lifted lead, opposite polarity 缺件、錯件、偏移、少錫、 連錫、多錫、空焊、假焊、 翹球、翹腳、極性反	
Inspection Range	檢查個數	Max.10,000 components/PCB 大于10,000元件/基板			
Data save	數據保存	Hard Disc 硬盤 > 10,000 Component / PCB			
Component library	元件庫檢查	Component classification/data base/template 元件分類/元件資料庫/元件模板			
Inspection time	標準檢查時間	4~15ms/元件 (4~15ms/component, <150ms/FOV)			
Results display	輸出檢查結果	PCB ID, PCB Description, Component Description, Defect Description, PCB Abbr. Diagram 基板ID、基板名稱、元件名稱、不良名稱、基板概略圖			
Process copy	制程複製	Process files can be saved to flash disc or shared via LAN and used on machines with same models. 同型號機器間制程通用，通過移動存儲復制或通過局域網共享			
Communication	通信	SMEMA, networked inline machine and rework station(NG terminal) LAN consists of inline machine, rework station, offline programming station and server. 通過SMEMA與上下游聯機; 在總機器和維修站(NG終端)聯網; 在總機器、維修站、離線編程站和服務器可組成局域網。			
Conveying flow	基板搬送流程	Bypass or Return 穿過或返回			
Reference position	基準位置	PCB Transport Direction: from left to right, from right to right, from left to right or from right to left (preset before shipment) 基板傳送方向: 左至左、右至右、左至右或右至左 (出廠時選擇)			

(Hardware Configurations) 硬件配置

		Post Printing 印刷後	Post Mounting 貼裝後	Post Reflow/Wave 焊接後
Vision system 圖像系統	Camera 攝像頭	3CCD Digital Cameras 3CCD數字攝像頭		
	Lighting system 照明系統	Three color (R, G, B) programming and multi angle lighting 軟件可編程三色 (R、G、B) 多角度LED照明		
	Resolution 圖像分辨率	20um/pixel, optional (可選) : 15um/pixel		
	FOV 視場	27.2mm x 20.5mm (20um/pixel), 20.4mm x 15.4mm (15um/pixel)		
	Minimum Inspected Component 可檢測最小元件	0201 (20um/pixel), Optional: 01005 (15um/pixel)		
Mechanical System 機構部分	XY Table 平臺	Driving System 驅動系統	AC servo system plus precise ball leadscrew 交流伺服系統+精密滾珠絲杆	
		Positioning Accuracy 定位精度	±8um	
	Positioning Speed 定位速度	900mm/sec		
	Conveyor 傳送方式	Stepper motor driven belt conveyor 步進電機驅動的皮帶傳送方式		
	Transport height 生產線高度	900±20mm		
	Conveyor width adjust 軌道寬度調整	Automated conveyor width adjust 自動調整		
	Working temperature	使用環境溫度	+5 - +40°C	
Working humidity	使用環境濕度	5% - 90%		
Air pressure	氣壓	0.4-0.6 Mpa 4-6 kgf/cm ²		
Power supply	電源	AC 1Φ220V ±10% 50-60 Hz 2KW		
Dimensions	尺寸	L900 x W1170 x H1620mm	L1160 x W1230 x H1640mm	
Weight	重量	800kg	900kg	

Please visit our website for more information: <http://www.folungwin.com>

欲知更多詳情, 請登陸我司網站: <http://www.folungwin.com>

全球销售 / 服务网络

Folungwin

Global Sales and Service Network



东莞市科隆威自动化设备有限公司

● 东莞公司 (总部-寮步)

东莞市寮步镇石大庙 (石步路段)
电话: (0769) 8322 8201-09
销售热线: (0769) 8322 8206
传真: (0769) 8322 8210
E-mail: folungwin@folungwin.com
http://www.folungwin.com

Dongguan LiaoBu Headquarter

Stone Great Road, Stone Foot Village, Liao Bu Town,
Dong Guan City, Guang Dong Province P.R.C
TEL: (0769) 8322 8201-09
Sales Hotline: (0769) 8322 8206
FAX: (0769) 8322 8210
E-mail: folungwin@folungwin.com
http://www.folungwin.com

● 北京

北京市大興區田官鎮田官西路清泰園 6 號樓
電話: (010) 67965302
傳真: (010) 67959849

Beijing

Building 6, Qing Le Yuan, Ju Gong Road (West),
Ju Gong Town, Da Xing District, Bei Jing
TEL: (010) 6796 5302
FAX: (010) 6795 9849

● 成都

四川省成都市青羊區玉皇廟 46 號 1 樓 1 單元 4 樓 8 號
電話: (028) 8695 7132
傳真: (028) 8695 7131

ChengDu

No.8, 4th Floor, Unit 1, Block 1, No.58, Yu Quan Street
Qing Yang Area, Cheng Du City, Si Chuan Province
TEL: (028) 8695 7132
FAX: (028) 8695 7131

● 蘇州

江蘇省蘇州市吳中經濟開發區崑崙路 125 號金月工業園
電話: (0512) 8528 8383 8528 6796
銷售熱線: (0512) 6528 8686
傳真: (0512) 8528 8989
E-mail: folungwin.sz@163.net
http://www.folungwin.com

SuZhou

Jin Yue Industrial Zone, 125#, NanHu Road
WuZhong Economic Development Zone
SuZhou City, JiangSu Province, P.R.C
TEL: (0512) 8528 8383 8528 6796
Sales HotLine: (0512) 6528 8686
FAX: (0512) 8528 8989
E-mail: folungwin.sz@163.net

● 上海

上海市閘行區華亭鎮寶城路 155 弄 19 號 501 室
電話: (021) 6460 2915
傳真: (021) 9415 4655

ShangHai

Room 501, No.16, Lane 155, BaoChang Road
ShenZhuang Town, MinHang Area, Shang Hai.
TEL: (021) 6460 2915
FAX: (021) 9415 4655

● 青島

青島市四方區遼寧路 25 號 2 號樓 1 單元 303 室
電話 / 傳真: (0532) 8565 5079

QingDao

Room 303, Unit 1, Building 2, No.25 Chong Qing
South Road, Si Fang Area, Qing Dao City, Shan
Dong Province
TEL/FAX: (0532) 8565 5079

● 深圳

廣東省深圳市羅湖區橫崗街道新田大道江氏大廈
三樓
電話: (0755) 2945 4310-13
傳真: (0755) 2945 4319

ShenZhen

3rd Floor, Jangse Tower, Xin Tian Road,
Fu Yong Village, Fu Yong Town, Shen Zhen,
China
TEL: (0755) 2945 4310-13
FAX: (0755) 2945 4319

● 廈門

福建省廈門市海峽區嘉庚路永升新城嘉庚園 309 號 202 室
電話: (0592) 566 8610
傳真: (0592) 565 2002

XiaMen

Room 302, No.30 Jia Yuan Li, Yong Sheng New City
HuL Area, Xia Men City, Fu Jian Province
TEL: (0592) 566 8610
FAX: (0592) 565 2002

● 武漢

武漢光谷關山一路 289 號逸思華庭 105 樓 502 室
電話 / 傳真: (027) 87777 959

WuHan

Room 502, Block 105, Yi Jing Hua Ting,
No. 289, Guan Shan 1st Road, Guang Gu,
Wu Han
TEL/FAX: (027) 87777 959

※ 以上地址名冊不含全球代理商
※ Folungwin international agents
are not listed above.

更多詳情敬請垂詢...
More information, please visit...

<http://www.folungwin.com>

或直接與各當地經銷商或代理商洽詢、商談
Or contact with distributors directly for consultation and negotiation.

Machine models and configurations are subject
to changes without notice in advance.
型號配置如有更改,恕不另行通知。

Apr 18, 2012 2012年4月18日
Version: 12 版本: 12