

NTM5510-X



Laser Marking Cell Series 3

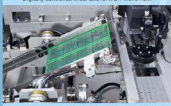


The Laser Marking Cell Series 3 (NTM5510-X) is specially designed to accurately mark PCB within a production line or as a stand alone system. The PCB is locked in its marking position while the CO₂ laser is moved using servo controlled X-Y axis. The user friendly Windows™ based software allows easy programmable marking position and number of markings. Double sided marking is achievable with an optional integrated inverting unit.

Laser Marking Cell Series 3 (NTM5510-X)

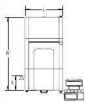
Features

- 10 Watt CO₂ (Class 4)
- Class 1 laser protected housing
- Air cooling system
- Fume extraction device
- User friendly software
- Digitally controlled linear axis for X & Y movements
- Selectable by-pass operation
- Automatic width adjustment conveyor
- PCB side clamping
- PCB lifting system for constant focal point
- Short product change-over time
- Barcode scanner or camera for readability check
- Industrial PC & 17" LCD monitor
- Integrated inverting unit for double-sided marking (Optional)
- SMEMA compatible



Technical Specifications

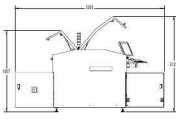
| | |
|------------------------------------|--|
| Laser type | : 10 Watt, CO ₂ , air cooled |
| Wave length | : 10.63 μ m |
| Laser class | : Class 4 |
| Housing class | : Class 1 |
| Marking area | : 105 x 105 mm per position 460 x 460 mm total coverage |
| Cell size | : \geq 0.127 mm |
| Marking types | : Text, barcodes, 2D codes and graphics |
| Conveyor type | : 3 mm ESD edge belt |
| Conveyor width | : Automatic width adjustment by program |
| Conveyor speed | : 24 m/min |
| PCB transfer time | : \pm 5 seconds |
| Applicable PCB width | : 65 - 460 mm |
| Applicable PCB length | : 80 - 508 mm |
| PCB transfer height | : 950 \pm 25 mm (or specify) |
| Component clearance | : Top 30 mm, bottom 30 mm (or specify) |
| Conveyor flow direction | : Left to right (or specify) |
| Conveyor interface | : SMEMA |
| Operating system | : Windows XP™ |
| Network interface | : Ethernet |
| Monitor | : 17" LCD Monitor |
| Power supply | : 230 VAC, 50Hz, 1Ph |
| Power consumption | : 1660 VA max. |
| Air supply | : 5 bar |
| Air consumption | : 20 ltr/min max. |
| External dimensions (L x W x H) | : 850 x 1645 x 1380 mm |
| Fixed point to front dimension (X) | : 330 mm |
| Weight | : 700 kg |
| Colour | : RAL 9002 |
| Noise level | : max. 65dB |



Plan View



Front View



Side View

